

VELLICHOR

2024 FLOORING LOOKBOOK





WWW.VELLICHORFLOORS.COM



ABOUT VELLICHOR

Vellichor Floors, backed by decades of experience and expertise in the hardwood flooring industry, is one of the leading manufacturers and distributors in the U.S. At Vellichor, our goal is to render and enhance the natural beauty of wood and bring the highest quality floors to your home so you can have peace of mind knowing your floors will last for generations.

We believe that the finest wood floors can only be produced with the state-of-the-art equipment and greatest care. Each of our plank is carefully pre-selected, precisely milled and finished to offering unique, high quality, stylish flooring products.

We carefully balance the goal of adding beauty and character to magnificent architectural structures while ensuring the preservation of our natural resources. We only utilize wood from responsibly managed forests in Europe and the U.S., and all the adhesives and finished we use are eco-friendly.

We are committed to producing flooring products that are environmentally friendly. Our products surpass the strictest health standards in the U.S. and other countries. Vellichor is proud to have complete environmental and quality certifications, including FloorScore, CARB phase 2, EPA, FSC and ISO9001, ISO14001, CE and etc.



ENGINEERED HARDWOOD FLOORING



RIVER RUN COLLECTION

Engineered Hardwood Floor | European Oak | Wire Brushed | UV Lacquer



SEINE

VC-801



Species	European Oak	Finish	UV Lacquer
Texture	Wire Brushed	Width	7-1/2"
Thickness	5/8"	Length	74-3/4"
Wear Layer	4mm	SQ. FT/ Carton	23.31

SEINE VC-801
RIVER RUN COLLECTION



GARONNE

VC-802



Species	European Oak	Finish	UV Lacquer
Texture	Wire Brushed	Width	7-1/2"
Thickness	5/8"	Length	74-3/4"
Wear Layer	4mm	SQ. FT/ Carton	23.31

MOSELLE

VC-807



Species	European Oak	Finish	UV Lacquer
Texture	Wire Brushed	Width	7-1/2"
Thickness	5/8"	Length	74-3/4"
Wear Layer	4mm	Sq. Ft. / Carton	23.31

VIENNE

VC-810



Species	European Oak	Finish	UV Lacquer
Texture	Wire Brushed	Width	7-1/2"
Thickness	5/8"	Length	74-3/4"
Wear Layer	4mm	SQ. FT/ Carton	23.31



ARTIST COLLECTION

Engineered Hardwood Floor | European Oak | Wire Brushed | UV Lacquer



DEGAS

VC-902



Species	European Oak	Finish	UV Lacquer
Texture	Wire Brushed	Width	7-1/2"
Thickness	3/4"	Length	74-3/4"
Wear Layer	4mm	SQ. FT/ Carton	23.31

DEGAS VC-902
ARTIST COLLECTION



PISSARRO

VC-904



Species	European Oak	Finish	UV Lacquer
Texture	Wire Brushed	Width	7-1/2"
Thickness	3/4"	Length	74-3/4"
Wear Layer	4mm	SQ. FT/ Carton	23.31

PISSARRO VC-904
ARTIST COLLECTION



MORISOT

VC-908



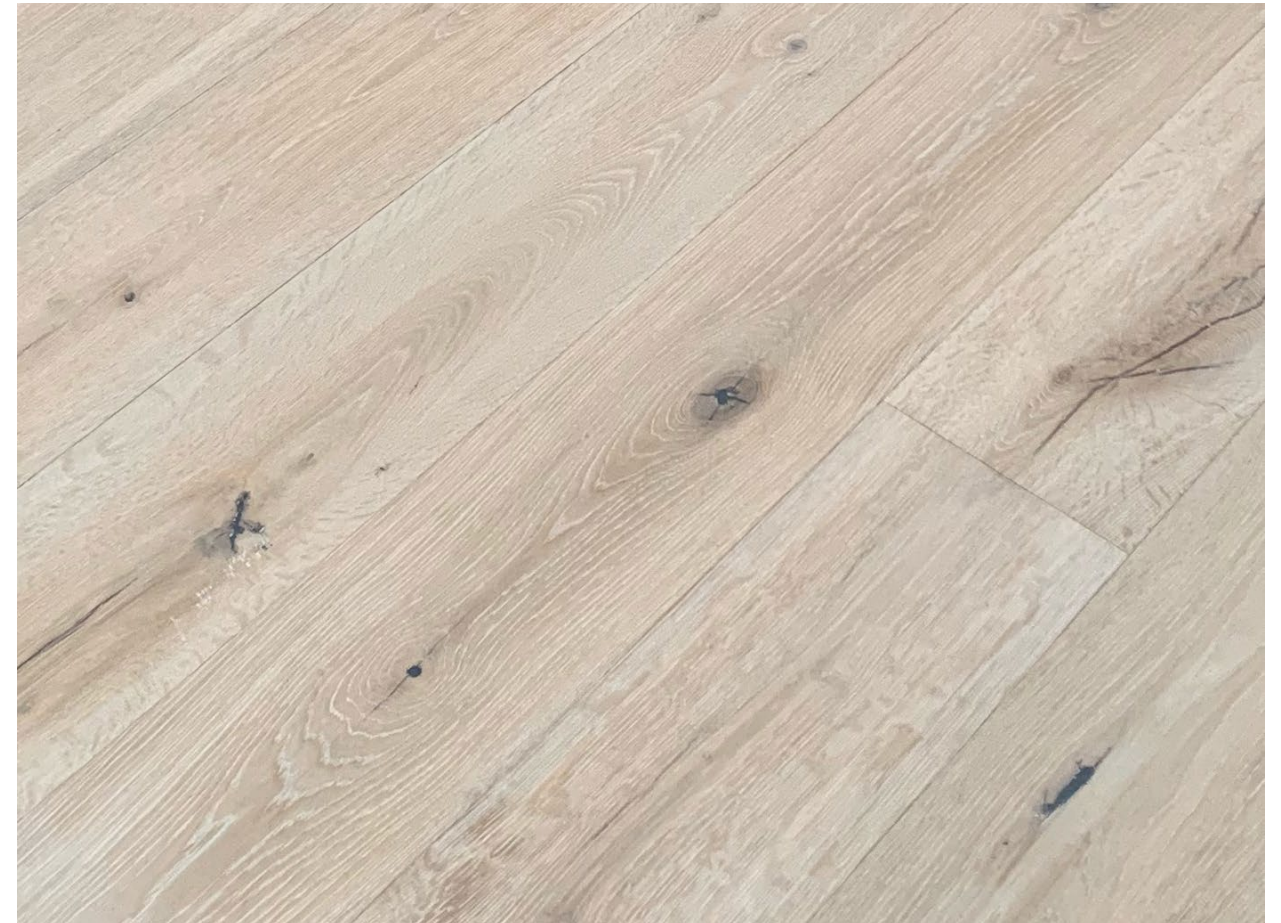
Species	European Oak	Finish	UV Lacquer
Texture	Wire Brushed	Width	7-1/2"
Thickness	3/4"	Length	74-3/4"
Wear Layer	4mm	SQ. FT/ Carton	23.31

MORISOT VC-908
ARTIST COLLECTION



BAZILLE

VC-910



Species	European Oak	Finish	UV Lacquer
Texture	Wire Brushed	Width	7-1/2"
Thickness	3/4"	Length	74-3/4"
Wear Layer	4mm	SQ. FT/ Carton	23.31

BAZILLE VC-910
ARTIST COLLECTION



LEPAGE

VC-914



Species	European Oak	Finish	UV Lacquer
Texture	Wire Brushed	Width	7-1/2"
Thickness	3/4"	Length	74-3/4"
Wear Layer	4mm	SQ. FT/ Carton	23.31

LEPAGE VC-914
ARTIST COLLECTION



METROPOLITAN COLLECTION

Engineered Hardwood Floor | European Oak | Wire Brushed | UV Lacquer

TOULOUSE

VC-102



Species	European Oak	Finish	UV Lacquer
Texture	Wire Brushed	Width	9-1/2"
Thickness	3/4"	Length	84-3/4"
Wear Layer	4mm	SQ. FT/ Carton	28.42

MARSEILLE

VC-105



Species	European Oak	Finish	UV Lacquer
Texture	Wire Brushed	Width	9-1/2"
Thickness	3/4"	Length	84-3/4"
Wear Layer	4mm	SQ. FT/ Carton	28.42

LYON

VC-106



Species	European Oak	Finish	UV Lacquer
Texture	Wire Brushed	Width	9-1/2"
Thickness	3/4"	Length	84-3/4"
Wear Layer	4mm	SQ. FT/ Carton	28.42

LILLE

VC-110



Species	European Oak	Finish	UV Lacquer
Texture	Wire Brushed	Width	9-1/2"
Thickness	3/4"	Length	84-3/4"
Wear Layer	4mm	SQ. FT/ Carton	28.42



PRIME COLLECTION

Engineered Hardwood Floor | European Oak | Wire Brushed | UV Lacquer



PRIME I VC-301
PRIME COLLECTION

PRIME I

VC-301



Species	European Oak	Finish	UV Lacquer
Texture	Wire Brushed	Width	9-1/2"
Thickness	3/4"	Length	87"
Wear Layer	4mm	SQ.FT/ Carton	28.42

PRIME II

VC-302



Species	European Oak	Finish	UV Lacquer
Texture	Wire Brushed	Width	9-1/2"
Thickness	3/4"	Length	87"
Wear Layer	4mm	SQ.FT/ Carton	28.42

PRIME III

VC-303



Species	European Oak	Finish	UV Lacquer
Texture	Wire Brushed	Width	7-1/2"
Thickness	3/4"	Length	75", 50% RL
Wear Layer	4mm	SQ.FT/ Carton	23.31



PRIME IV

VC-304



Species	European Oak	Finish	UV Lacquer
Texture	Wire Brushed	Width	7-1/2"
Thickness	3/4"	Length	75", 50% RL
Wear Layer	4mm	SQ.FT/ Carton	23.31

PRIME IV VC-304
PRIME COLLECTION

PRIME V

VC-305



Species	European Oak	Finish	UV Lacquer
Texture	Wire Brushed	Width	7-1/2"
Thickness	5/8"	Length	75", 50% RL
Wear Layer	4mm	SQ.FT/ Carton	23.31



THRONE COLLECTION

Engineered Hardwood Floor | European Oak | Wire Brushed | UV Lacquer



WINTERFELL

VC-202



Species	European Oak	Finish	UV Lacquer
Texture	Wire Brushed	Width	9-1/2"
Thickness	3/4"	Length	87", 60% RL
Wear Layer	4mm	SQ. FT/Carton	28.42

WINTERFELL VC-202
THRONE COLLECTION



HIGHGARDEN

VC-203



Species	European Oak	Finish	UV Lacquer
Texture	Wire Brushed	Width	9-1/2"
Thickness	3/4"	Length	87", 60% RL
Wear Layer	4mm	SQ. FT/Carton	28.42

HIGHGARDEN VC-203
THRONE COLLECTION



SUNSPEAR VC-204
THRONE COLLECTION

SUNSPEAR

VC-204



Species	European Oak	Finish	UV Lacquer
Texture	Wire Brushed	Width	9-1/2"
Thickness	3/4"	Length	87", 60% RL
Wear Layer	4mm	SQ. FT/Carton	28.42

LUXURY SPC FLOORING



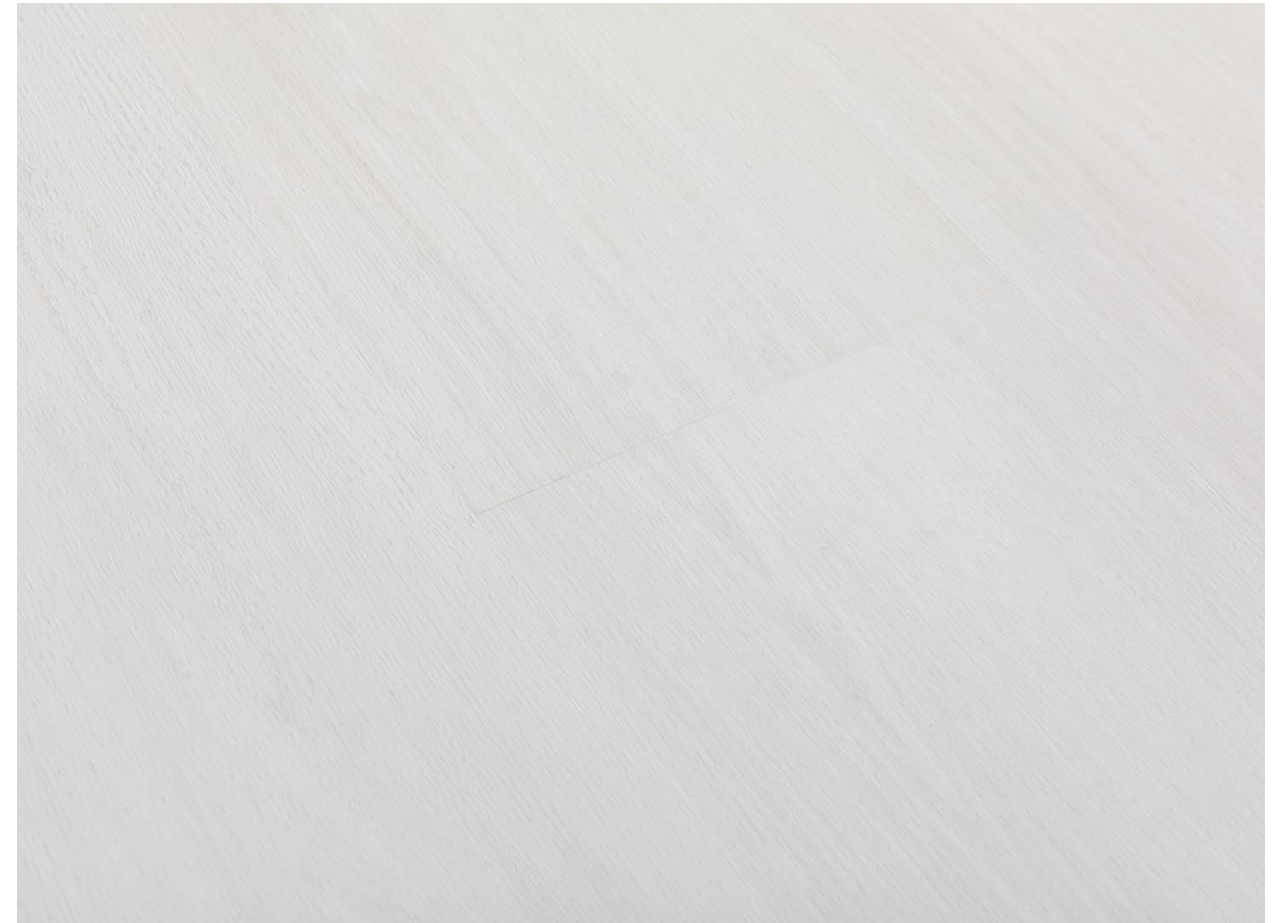
GEMSTONE COLLECTION

VibrantCore Waterproof SPC | Ceramic Bead Enhanced Urethane



PEARL

VC-501



Structure	VibranCore Waterproof SPC	Finish	Ceramic Bead Enhanced Urethane
Click System	V-Tech Click Lock System	Width	9"
Thickness	6.5mm with 1.5mm IXPE	Length	60"
Wear Layer	0.5mm/20mil	Sq. Ft. / Carton	26.18

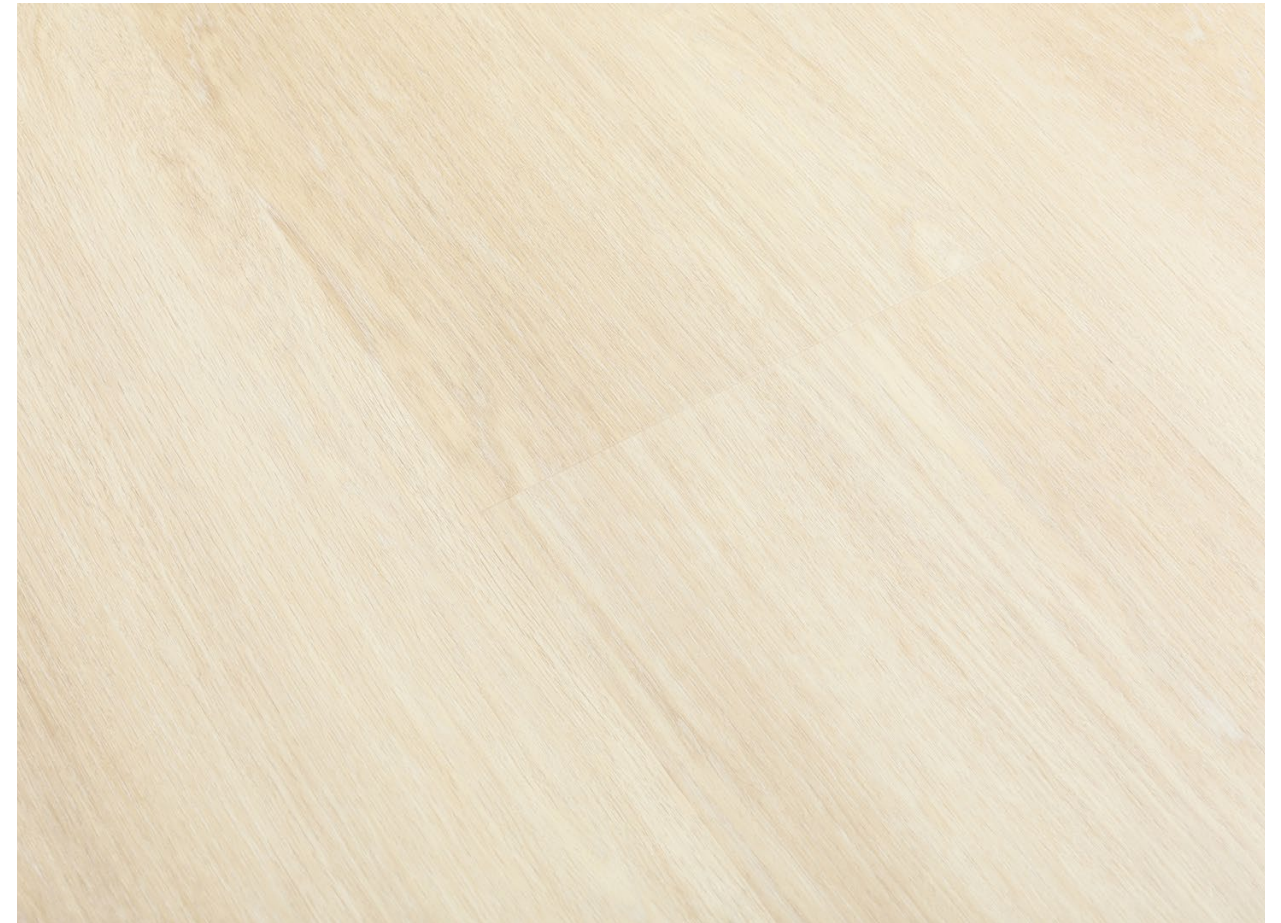
PEARL VC-501
GEMSTONE COLLECTION



GARNET VC-502
GEMSTONE COLLECTION

GARNET

VC-502



Structure	VibranCore Waterproof SPC	Finish	Ceramic Bead Enhanced Urethane
Click System	V-Tech Click Lock System	Width	9"
Thickness	6.5mm with 1.5mm IXPE	Length	60"
Wear Layer	0.5mm/20mil	Sq. Ft. / Carton	26.18



AQUAMARINE VC-503
GEMSTONE COLLECTION

AQUAMARINE

VC-503



Structure	VibranCore Waterproof SPC	Finish	Ceramic Bead Enhanced Urethane
Click System	V-Tech Click Lock System	Width	9"
Thickness	6.5mm with 1.5mm IXPE	Length	60"
Wear Layer	0.5mm/20mil	Sq. Ft. / Carton	26.18



EMERALD

VC-504



Structure	VibranCore Waterproof SPC	Finish	Ceramic Bead Enhanced Urethane
Click System	V-Tech Click Lock System	Width	9"
Thickness	6.5mm with 1.5mm IXPE	Length	60"
Wear Layer	0.5mm/20mil	Sq. Ft. / Carton	26.18

EMERALD VC-504
GEMSTONE COLLECTION



PERIDOT

VC-505



Structure	VibranCore Waterproof SPC	Finish	Ceramic Bead Enhanced Urethane
Click System	V-Tech Click Lock System	Width	9"
Thickness	6.5mm with 1.5mm IXPE	Length	60"
Wear Layer	0.5mm/20mil	Sq. Ft. / Carton	26.18

PERIDOT VC-505
GEMSTONE COLLECTION



OPAL VC-506
GEMSTONE COLLECTION

OPAL

VC-506



Structure	VibranCore Waterproof SPC	Finish	Ceramic Bead Enhanced Urethane
Click System	V-Tech Click Lock System	Width	9"
Thickness	6.5mm with 1.5mm IXPE	Length	60"
Wear Layer	0.5mm/20mil	Sq. Ft. / Carton	26.18



TOPAZ VC-507
GEMSTONE COLLECTION

TOPAZ

VC-507



Structure	VibranCore Waterproof SPC	Finish	Ceramic Bead Enhanced Urethane
Click System	V-Tech Click Lock System	Width	9"
Thickness	6.5mm with 1.5mm IXPE	Length	60"
Wear Layer	0.5mm/20mil	Sq. Ft. / Carton	26.18



TURQUOISE VC-508
GEMSTONE COLLECTION

TURQUOISE

VC-508



Structure	VibranCore Waterproof SPC	Finish	Ceramic Bead Enhanced Urethane
Click System	V-Tech Click Lock System	Width	9"
Thickness	6.5mm with 1.5mm IXPE	Length	60"
Wear Layer	0.5mm/20mil	Sq. Ft. / Carton	26.18



GALAXY COLLECTION

VibrantCore Waterproof SPC | Ceramic Bead Enhanced Urethane



MILKY WAY VC-601
GALAXY COLLECTION

MILKY WAY

VC-601

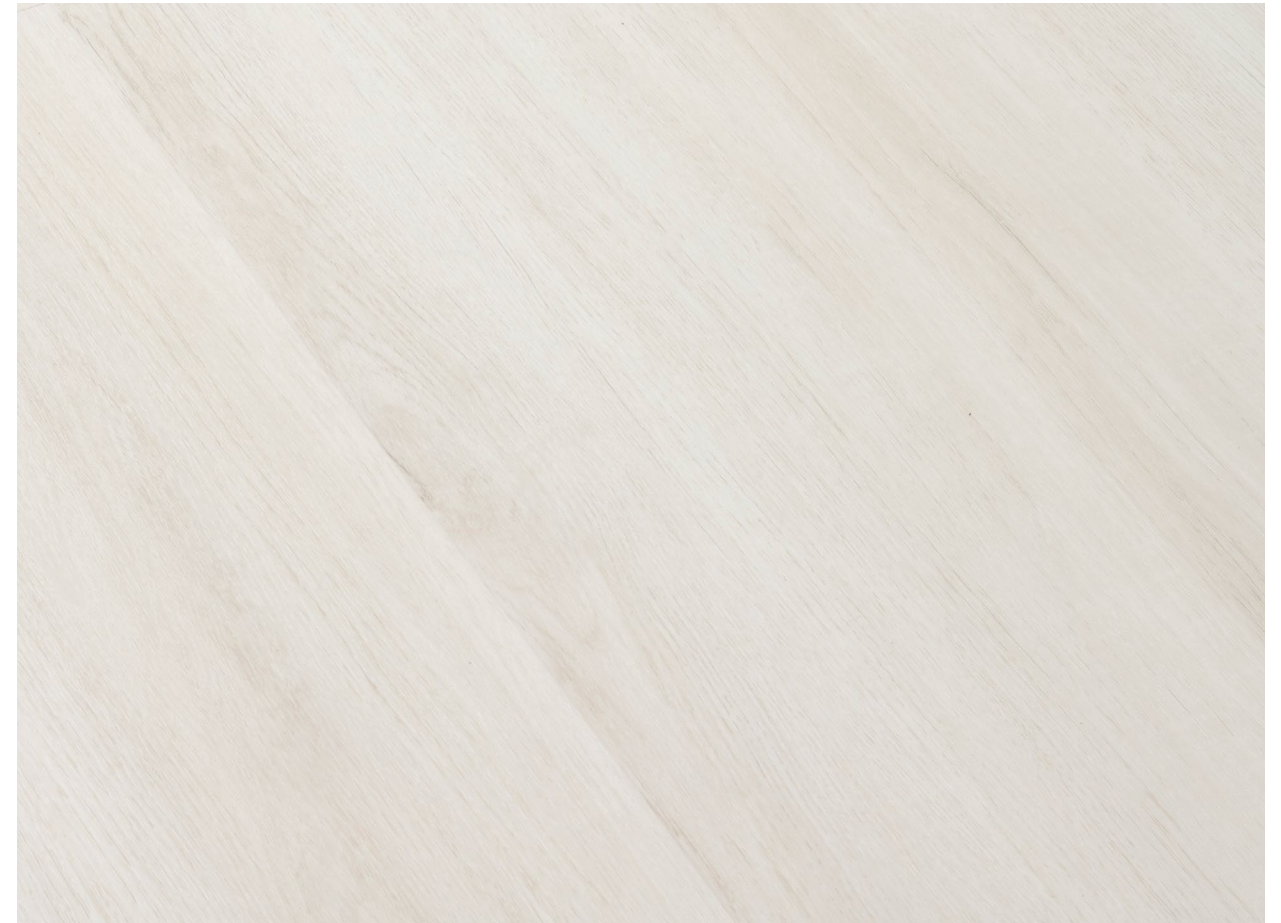


Structure	VibranCore Waterproof SPC	Finish	Ceramic Bead Enhanced Urethane
Click System	V-Tech Click Lock System	Width	9"
Thickness	7.5mm with 1.5mm IXPE	Length	60"
Wear Layer	0.5mm/20mil	Sq. Ft. / Carton	22.44



BLACK EYE

VC-602



Structure	VibranCore Waterproof SPC	Finish	Ceramic Bead Enhanced Urethane
Click System	V-Tech Click Lock System	Width	9"
Thickness	7.5mm with 1.5mm IXPE	Length	60"
Wear Layer	0.5mm/20mil	Sq. Ft. / Carton	22.44

BLACK EYE VC-602
GALAXY COLLECTION



CENTAURUS VC-603
GALAXY COLLECTION

CENTAURUS

VC-603



Structure	VibranCore Waterproof SPC	Finish	Ceramic Bead Enhanced Urethane
Click System	V-Tech Click Lock System	Width	9"
Thickness	7.5mm with 1.5mm IXPE	Length	60"
Wear Layer	0.5mm/20mil	Sq. Ft. / Carton	22.44



HOAG'S

VC-604



Structure	VibranCore Waterproof SPC	Finish	Ceramic Bead Enhanced Urethane
Click System	V-Tech Click Lock System	Width	9"
Thickness	7.5mm with 1.5mm IXPE	Length	60"
Wear Layer	0.5mm/20mil	Sq. Ft. / Carton	22.44

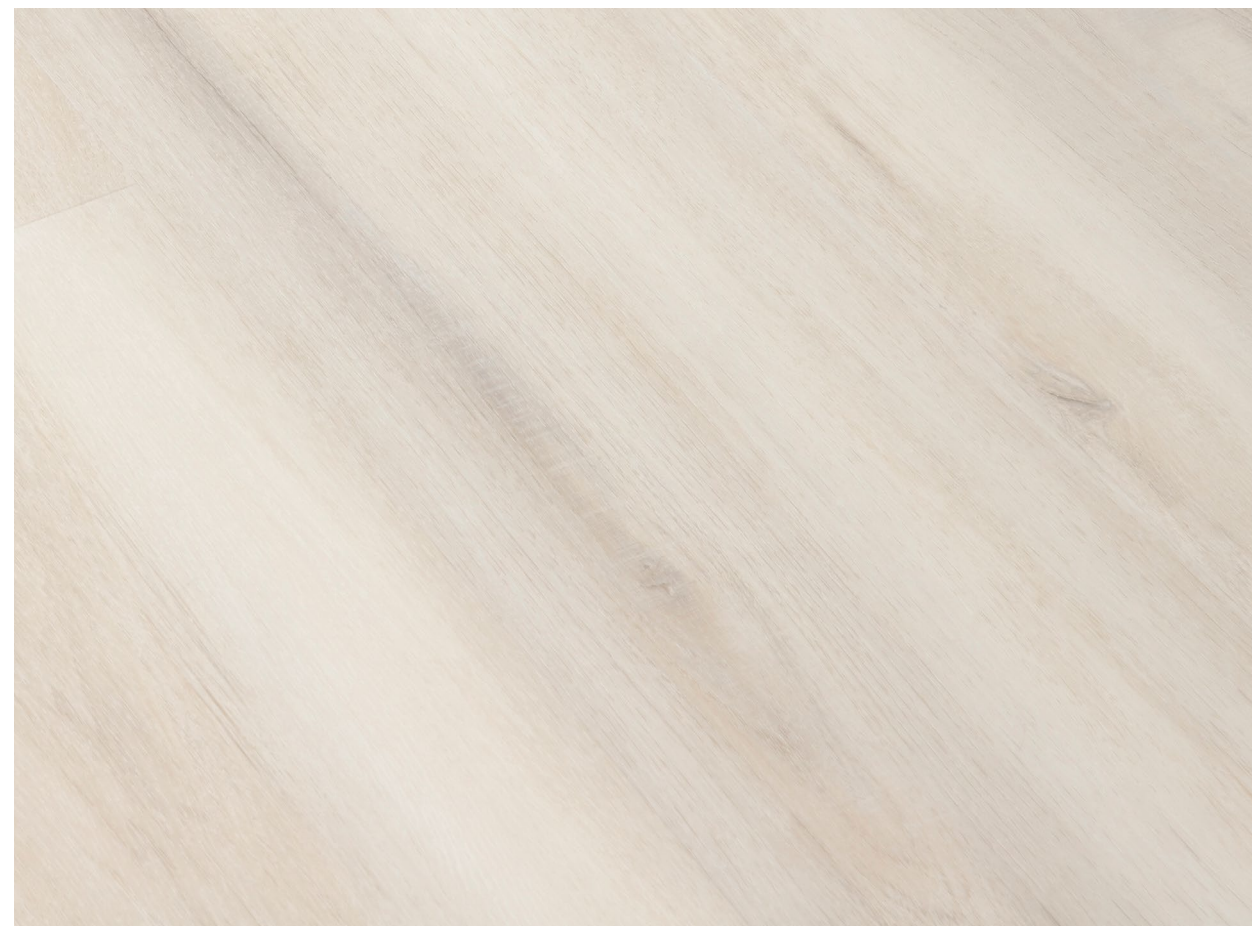
HOAG'S VC-604
GALAXY COLLECTION



WHIRLPOOL VC-605
GALAXY COLLECTION

WHIRLPOOL

VC-605



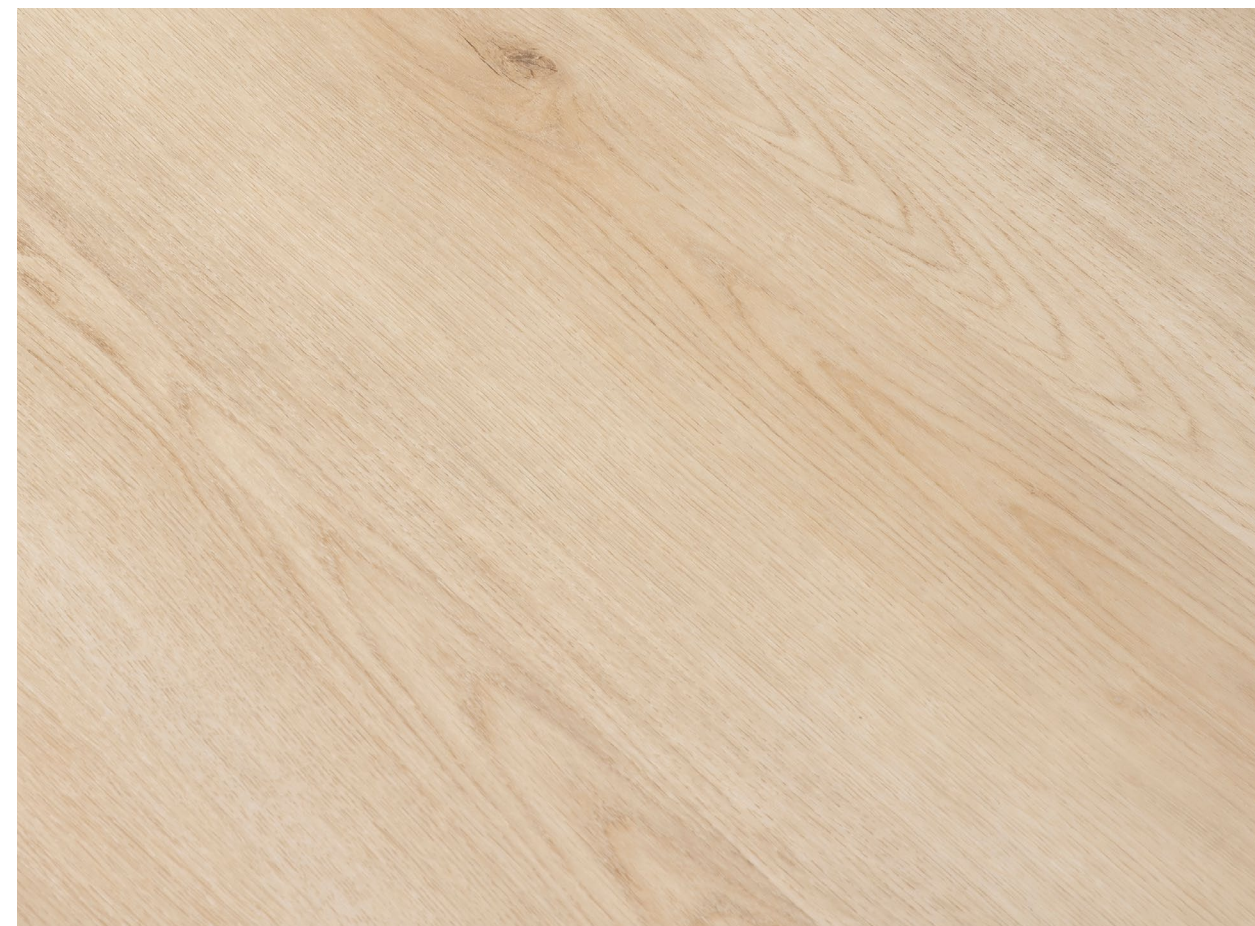
Structure	VibranCore Waterproof SPC	Finish	Ceramic Bead Enhanced Urethane
Click System	V-Tech Click Lock System	Width	9"
Thickness	7.5mm with 1.5mm IXPE	Length	60"
Wear Layer	0.5mm/20mil	Sq. Ft. / Carton	22.44



CYGNUS VC-606
GALAXY COLLECTION

CYGNUS

VC-606



Structure	VibranCore Waterproof SPC	Finish	Ceramic Bead Enhanced Urethane
Click System	V-Tech Click Lock System	Width	9"
Thickness	7.5mm with 1.5mm IXPE	Length	60"
Wear Layer	0.5mm/20mil	Sq. Ft. / Carton	22.44



ANDROMEDA

VC-607



Structure	VibranCore Waterproof SPC	Finish	Ceramic Bead Enhanced Urethane
Click System	V-Tech Click Lock System	Width	9"
Thickness	7.5mm with 1.5mm IXPE	Length	60"
Wear Layer	0.5mm/20mil	Sq. Ft. / Carton	22.44

ANDROMEDA VC-607
GALAXY COLLECTION



PINWHEEL

VC-608



Structure	VibranCore Waterproof SPC	Finish	Ceramic Bead Enhanced Urethane
Click System	V-Tech Click Lock System	Width	9"
Thickness	7.5mm with 1.5mm IXPE	Length	60"
Wear Layer	0.5mm/20mil	Sq. Ft. / Carton	22.44

PINWHEEL VC-608
GALAXY COLLECTION



SUMMIT COLLECTION

VibrantCore Waterproof SPC | Ceramic Bead Enhanced Urethane



DENALI VC-701
SUMMIT COLLECTION

DENALI

VC-701



Structure	VibranCore Waterproof SPC	Finish	Ceramic Bead Enhanced Urethane
Click System	V-Tech Click Lock System	Width	9"
Thickness	8.5mm with 1.5mm IXPE	Length	60"
Wear Layer	0.5mm/20mil	Sq. Ft. / Carton	18.7



BLACKBURN VC-702
SUMMIT COLLECTION

BLACKBURN

VC-702

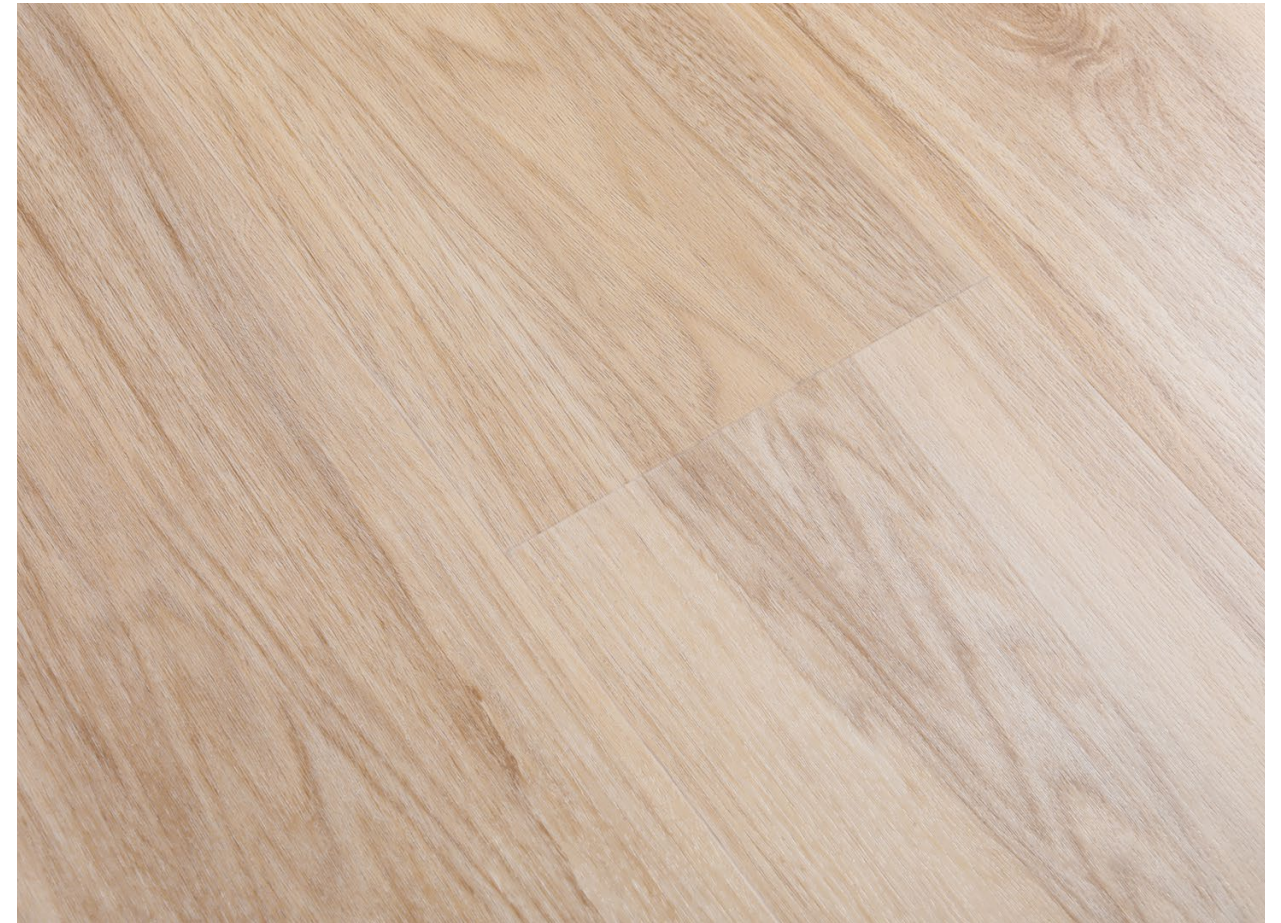


Structure	VibranCore Waterproof SPC	Finish	Ceramic Bead Enhanced Urethane
Click System	V-Tech Click Lock System	Width	9"
Thickness	8.5mm with 1.5mm IXPE	Length	60"
Wear Layer	0.5mm/20mil	Sq. Ft. / Carton	18.7



WHITNEY

VC-703



Structure	VibranCore Waterproof SPC	Finish	Ceramic Bead Enhanced Urethane
Click System	V-Tech Click Lock System	Width	9"
Thickness	8.5mm with 1.5mm IXPE	Length	60"
Wear Layer	0.5mm/20mil	Sq. Ft. / Carton	18.7

WHITNEY VC-703
SUMMIT COLLECTION



ELBERT

VC-704



Structure	VibranCore Waterproof SPC	Finish	Ceramic Bead Enhanced Urethane
Click System	V-Tech Click Lock System	Width	9"
Thickness	8.5mm with 1.5mm IXPE	Length	60"
Wear Layer	0.5mm/20mil	Sq. Ft. / Carton	18.7

ELBERT VC-704
SUMMIT COLLECTION



TORBERT VC-705
SUMMIT COLLECTION

TORBERT

VC-705



Structure	VibranCore Waterproof SPC	Finish	Ceramic Bead Enhanced Urethane
Click System	V-Tech Click Lock System	Width	9"
Thickness	8.5mm with 1.5mm IXPE	Length	60"
Wear Layer	0.5mm/20mil	Sq. Ft. / Carton	18.7



PAVLOF

VC-706



Structure	VibranCore Waterproof SPC	Finish	Ceramic Bead Enhanced Urethane
Click System	V-Tech Click Lock System	Width	9"
Thickness	8.5mm with 1.5mm IXPE	Length	60"
Wear Layer	0.5mm/20mil	Sq. Ft. / Carton	18.7

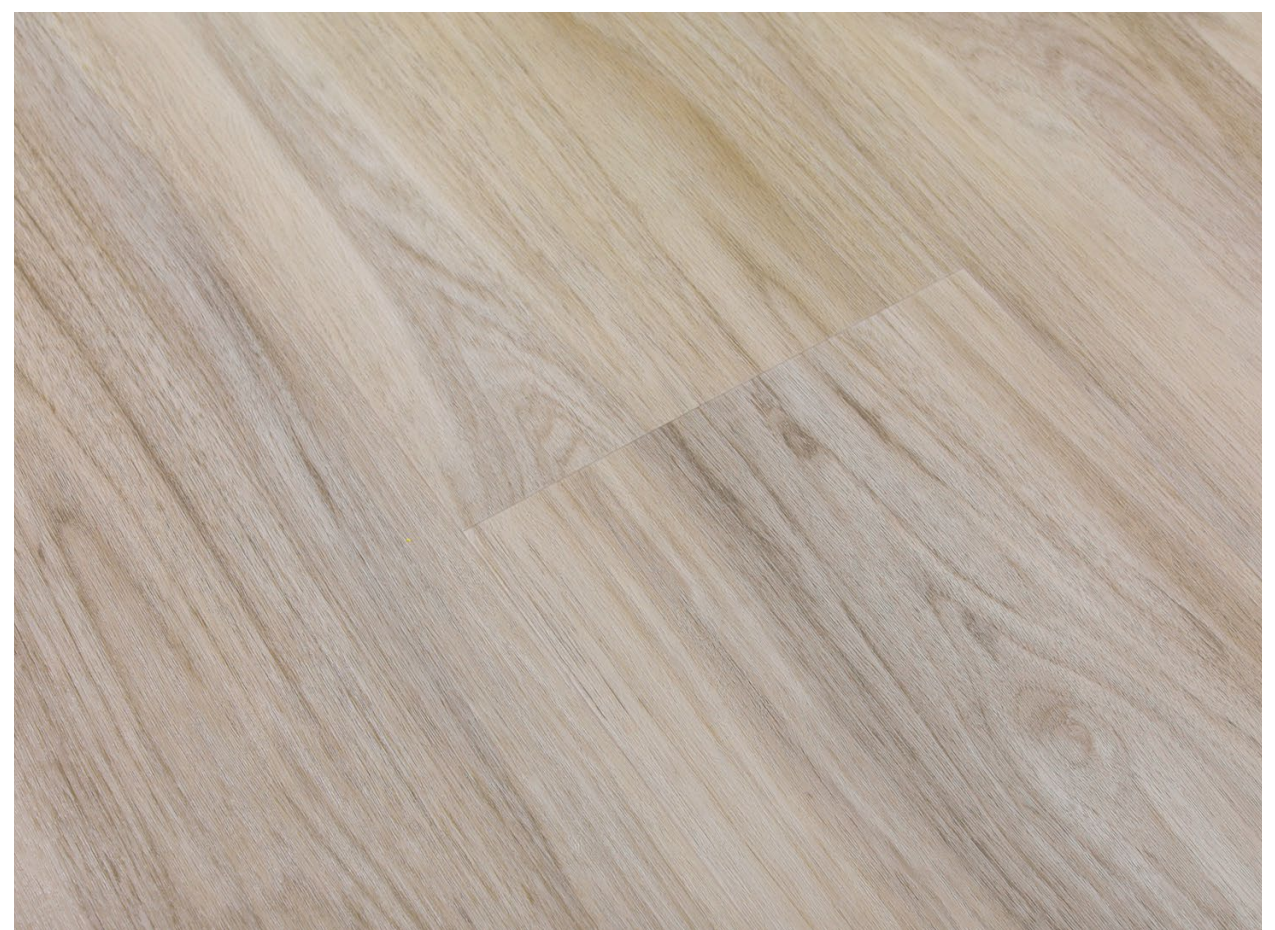
PAVLOF VC-706
SUMMIT COLLECTION



NEACOLA VC-708
SUMMIT COLLECTION

NEACOLA

VC-708

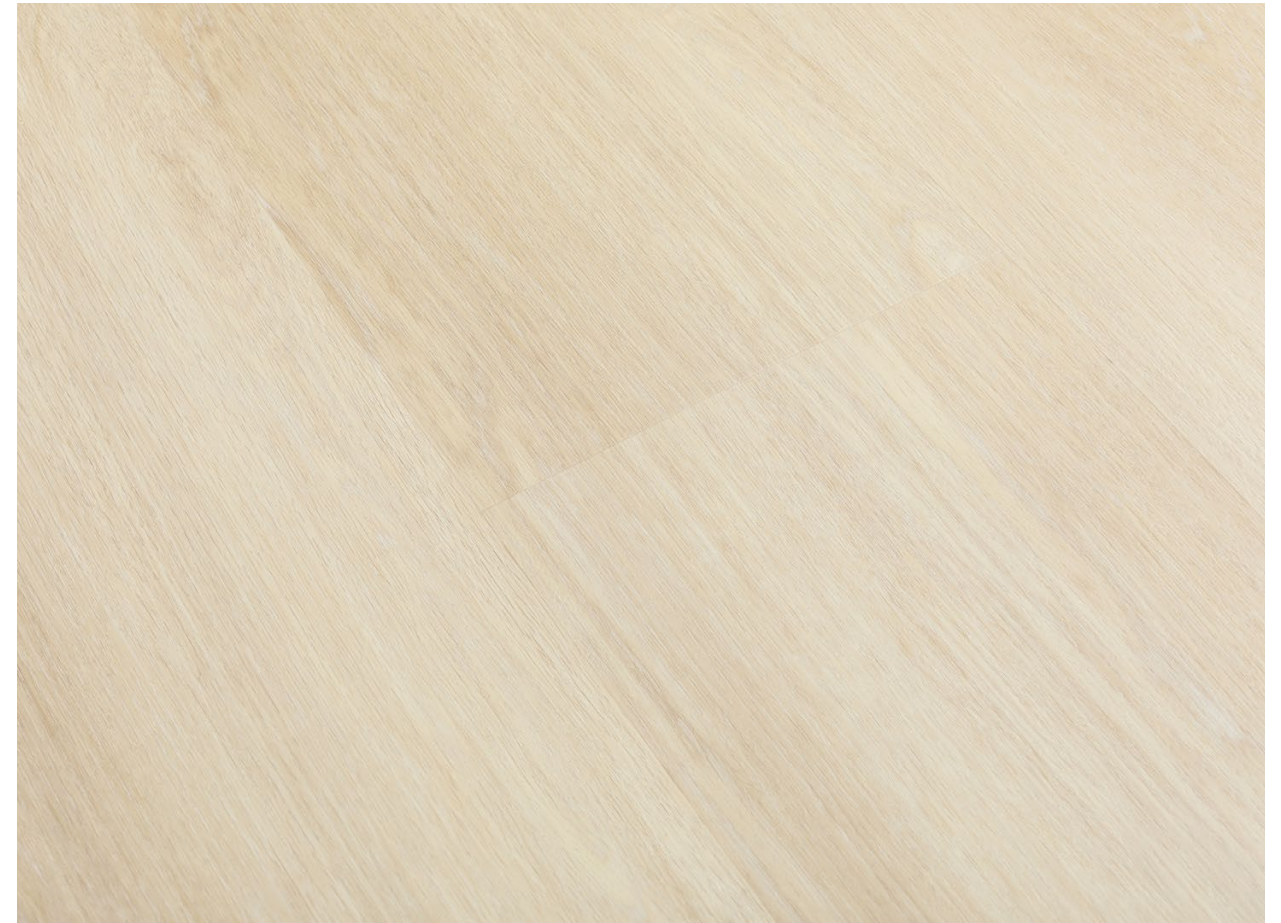


Structure	VibranCore Waterproof SPC	Finish	Ceramic Bead Enhanced Urethane
Click System	V-Tech Click Lock System	Width	9"
Thickness	8.5mm with 1.5mm IXPE	Length	60"
Wear Layer	0.5mm/20mil	Sq. Ft. / Carton	18.7



SHASTA

VC-709



Structure	VibranCore Waterproof SPC	Finish	Ceramic Bead Enhanced Urethane
Click System	V-Tech Click Lock System	Width	9"
Thickness	8.5mm with 1.5mm IXPE	Length	60"
Wear Layer	0.5mm/20mil	Sq. Ft. / Carton	18.7

SHASTA VC-709
SUMMIT COLLECTION



SHASTA (HERRINGBONE)

VC-709H



Structure	VibranCore Waterproof SPC	Finish	Ceramic Bead Enhanced Urethane
Click System	V-Tech Click Lock System	Width	5"
Thickness	8.5mm with 1.5mm IXPE	Length	25"
Wear Layer	0.5mm/20mil	Sq. Ft. / Carton	8.41

SHASTA (HERRINGBONE) VC-709H
SUMMIT COLLECTION

